



SPEECH & LANGUAGE DEVELOPMENTAL MILESTONES

checklist
BIRTH - TWO

BIRTH - 3 MONTHS

- ☐ Displays startle response to loud sound
- ☐ Visually tracks the source of sound
- ☐ Attends to voice
- ☐ Turns head toward voice
- ☐ Turns head toward sound source
- ☐ Smiles reflexively
- ☐ Cries for assistance
- ☐ Quiets when picked up
- ☐ Ceases activity or coos back when person talks (2 months)
- ☐ Vocalizes predominantly vowels (aa, ee)

7 MONTHS - 9 MONTHS

- ☐ Looks at some objects when they are named
- ☐ Understands "no"
- ☐ Plays pee-a-boo, pat-a-cake
- ☐ Begins to use gestures
- ☐ Uses strings of different syllables together (e.g., mababmakea)
- ☐ Uncovers hidden toys
- ☐ Shares a common focus on something (joint reference)
- ☐ Uses inflected vocal play, intonation patterns

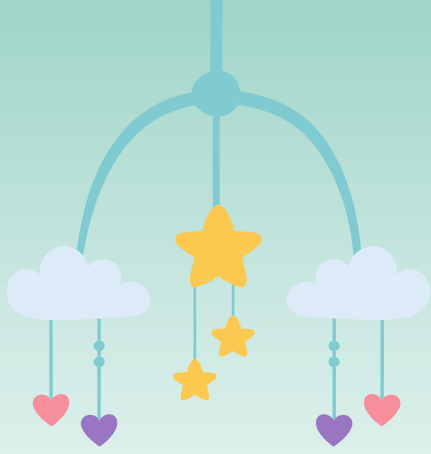
4 MONTHS - 6 MONTHS

- ☐ Responds by raising arms when mother says, "come here"
- ☐ Moves/looks toward family member when they are named (e.g., where's daddy?)
- ☐ Explores the vocal mechanism through vocal play (e.g., growling, squealing, yelling, making raspberries)
- ☐ Begins babbling (e.g., baba)
- ☐ Vocalizes pleasure and displeasure
- ☐ Responds to name (5 months)

10 MONTHS - 12 MONTHS

- ☐ Understands up to 10 words (e.g., bye, hot)
- ☐ Understands a simple direction with gesture
- ☐ Begins to relate symbol and object
- ☐ Gives block, toy, or object upon request
- ☐ Looks in correct place for hidden toys
- ☐ Turns head instantly* to own name
- ☐ Gestures/vocalizes to indicate wants/needs
- ☐ Jabbers loudly; uses wide variety of sounds and intonations, varies pitch
- ☐ **Uses first true word**





ONE-TWO YEARS OLD



RECEPTIVE LANGUAGE

- ☐ Interrupts activity when name is called
- ☐ Looks at objects that are pointed to
- ☐ Demonstrates functional play
- ☐ Demonstrates relational play
- ☐ Demonstrates self-directed play
- ☐ Follows 1-step commands (e.g., give mommy spoon)
- ☐ Follows directions using one or two spatial concepts (e.g., in or on) (19-24m)
- ☐ Points to one to five body parts on command
- ☐ Points to recognized objects (emerging nomination)
- ☐ Listens to simple stories; especially likes to hear stories repeated (19-24m)

EXPRESSIVE LANGUAGE

- ☐ 50 words in vocabulary (18m)
- ☐ Two-word utterances (18-24m)
- ☐ Uses three, four-word responses 50% of time and 2-word utterances the other 50% (24m)
- ☐ 200 – 300 words expressively (24m)
Uses “and” to form conjoined sentence (24m)
- ☐ 51% of utterances consist of nouns
- ☐ Uses overextension (e.g., all brown-eyed slender women are “mommy”)
- ☐ Answers the question “what’s this?”
- ☐ Responds to yes-no questions by nodding or shaking head
- ☐ Says “all gone”
- ☐ Refer to self with pronoun and name (“Me Lexie”) (19-24m)
- ☐ Verbalizes immediate experiences (e.g., bath hot!”)
- ☐ Begins to use some verbs and adjectives (e.g., eat, sleepy)

